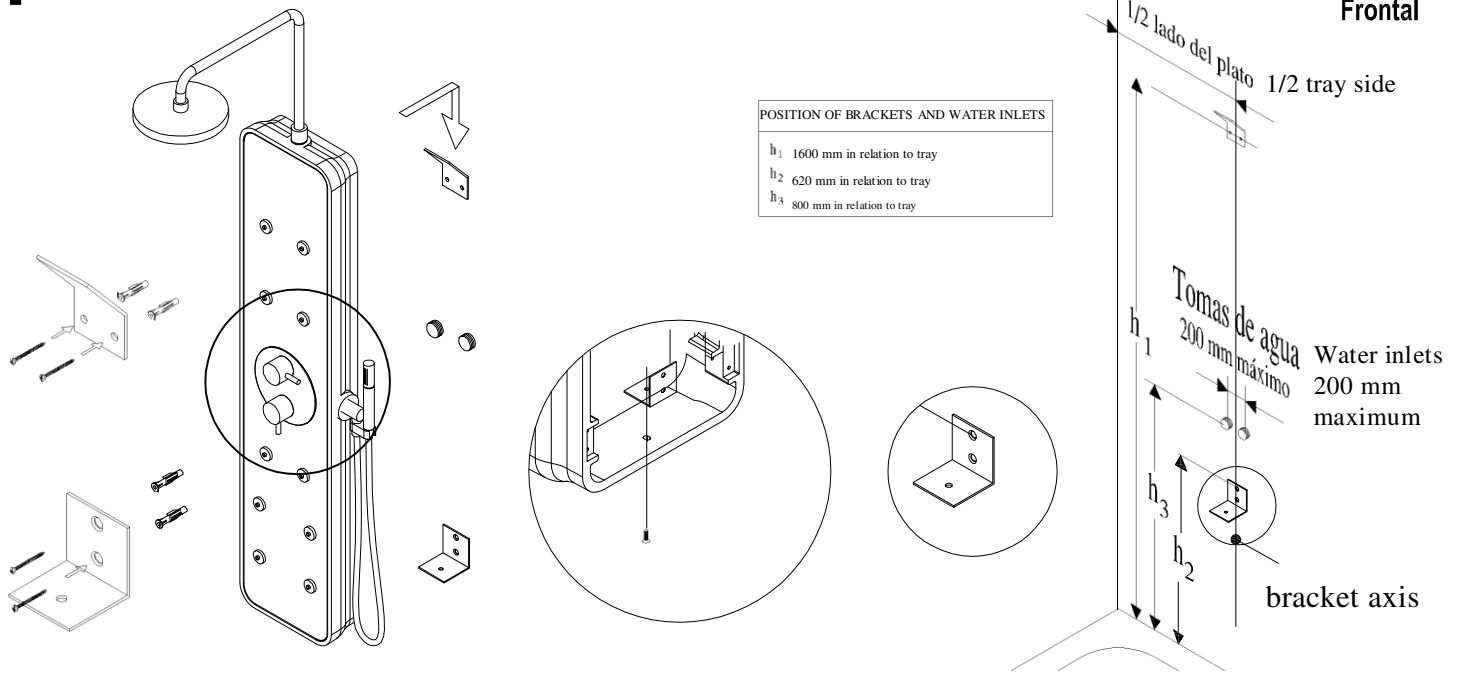




I-PLASH PANEL ASSEMBLY INSTRUCTIONS

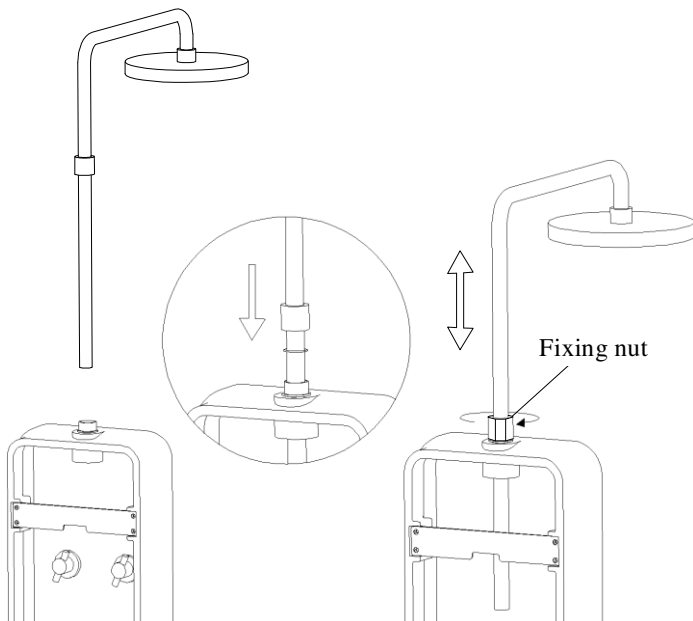
08051458

1



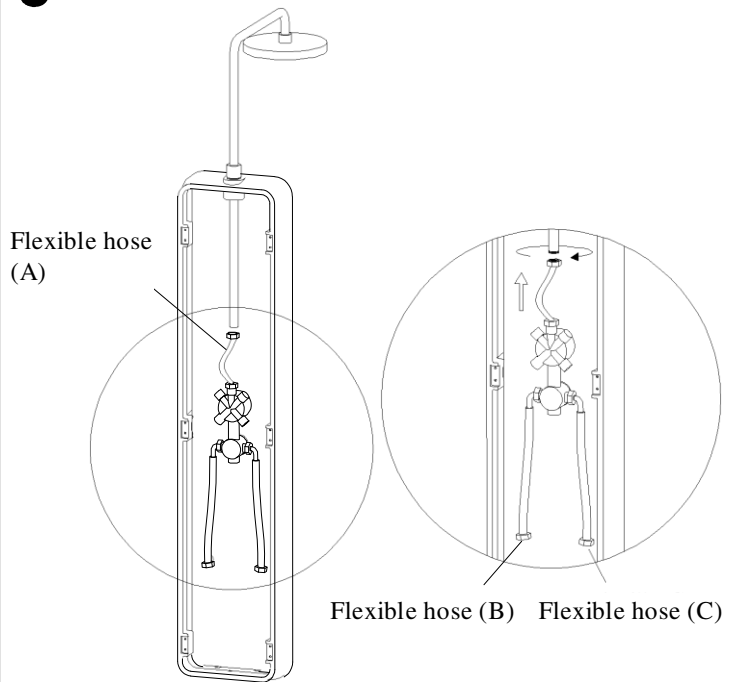
Fix fittings to wall according to specified dimensions. Hang panel on upper fitting and support lower part, screwing fitting to panel as shown in the figure.

2



Insert riser inside panel and adjust its height. To set it at the desired height, tighten the fixing nut.

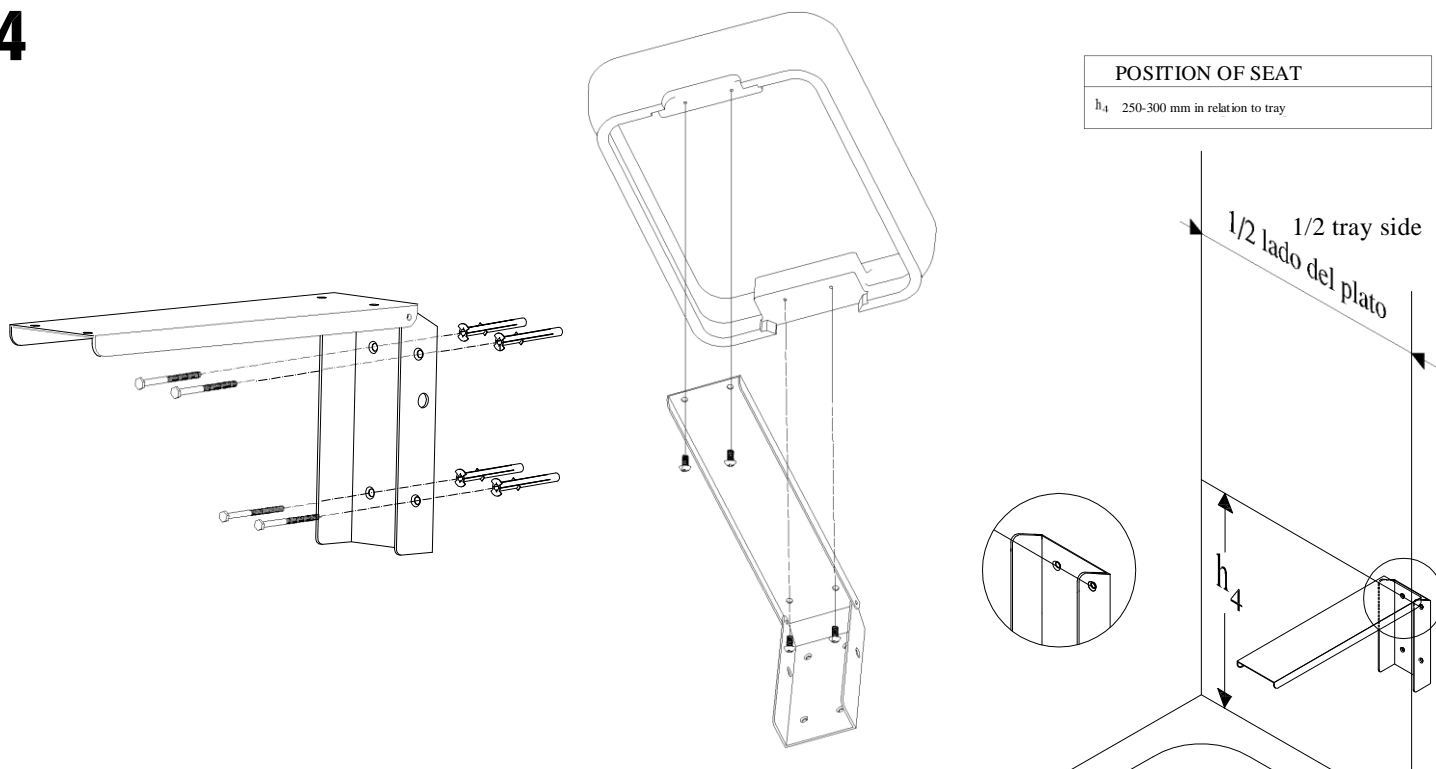
3



Screw flexible hose (A) to riser. Screw flexible hoses (B) and (C) to water inlets.

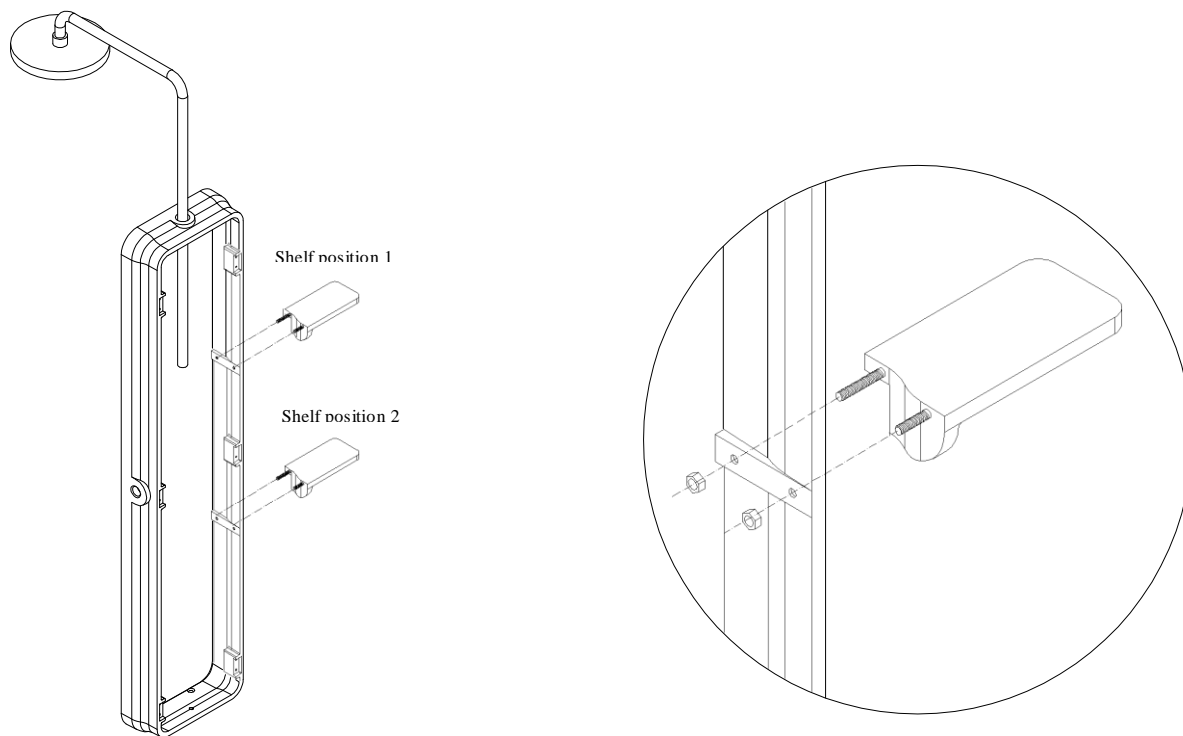


4



Position metal frame at height shown. Screw it to wall. Fix body of seat to metal frame.

5



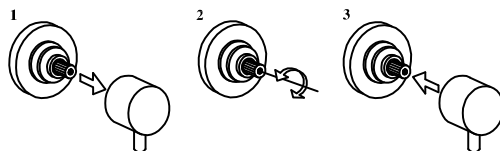
Insert shelf into frame. Fix shelf in place using the screws supplied.

TAP OPERATION INSTRUCTIONS

THERMOSTATIC TAPS + SELECTOR

ADJUSTMENT OF THERMOSTAT:

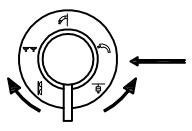
1. Remove handle from thermostat by pulling it off.
2. Open water inlet and measure temperature using a thermometer. Turn adjustment nut to the right or the left until water temperature is 38 °C.
3. Put thermostat handle back on so that in the vertical position it is at 38 °C.



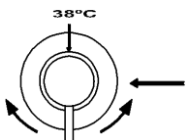
5 OPTIONS

i-PLASH

THERMOSTATIC TAPS + SELECTOR

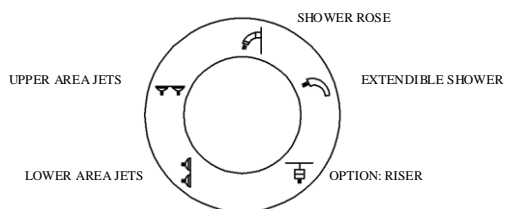


SELECTOR: by turning the selector in an anti-clockwise direction you can select the symbol for the type of shower or massage you want, and by turning it clockwise you turn the tap on.



THERMOSTAT: by turning the thermostat you can adjust water temperature. In the vertical position, water temperature is 38 °C.

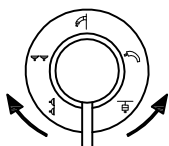
FUNCTIONS CLASSIFIER:



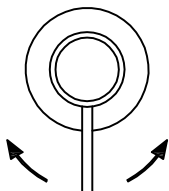
MIXER TAP + SELECTOR

5 OPTIONS

i-PLASH



SELECTOR: turn the selector to the symbol for each function and choose the type of shower or massage you want.



MIXER TAP: Lift and turn the handle to turn water on and set it to the required temperature.